

MANUFACTURING CAPACITY YOU DIDN'T KNOW YOU HAD DISCOVER HIDDEN CAPACITY WITH MANUFACTURING INTELLIGENCE

CONNECT INTERFACE BUSINESS **CONFIDENCE** EXPERTISE AMBITIOUS FLUID LINK C
ONFIDENCE EXPERTISE AMBITIOUS FLUID LINK **CONTROL** LIFEblood CONNECT INT
FLUID LINK CONTROL **LIFEblood** CONNECT INTERFACE BUSINESS **CONFIDENCE** E
NTERFACE BUSINESS CONTROL CONFIDENCE EXPERTISE AMBITIOUS FLUID LINK CO
CE EXPERTISE AMBITIOUS FLUID LINK CONTROL **LIFEblood** CONNECT INTERFACE B
ROL LIFEblood CONNECT INTERFACE BUSINESS CONFIDENCE EXPERTISE AMBITIOU
INTERFACE **LIFEblood** CONFIDENCE EXPERTISE AMBITIOUS FLUID LINK CONTROL LI
CE EXPERTISE AMBITIOUS FLUID LINK **CONTROL** LIFEblood CONNECT INTERFACE B

Most corporate manufacturing and supply chain initiatives target the cost component of the operation. While cost-cutting initiatives are important, companies are rewarded on revenue growth and margin improvements. Companies running close to capacity must often make large capital investments to boost production. Some companies have chosen to outsource additional production to contract manufacturers. Both these approaches erode company profitability.

Revenue growth and fulfilling customer demand are critical success factors for any profit-seeking manufacturer. The objective is to capture additional revenues while curbing or eliminating capital investments. It is a seemingly elusive goal, yet highly profitable companies have found ways to achieve this goal.

Growing by Avoiding Capital Investments via Manufacturing Intelligence

In today's cut-throat manufacturing environment, business decisions must be made in real time. The stakes are high. Not having real-time information about manufacturing operations can result in reduced product margins or significant revenue loss due to missed opportunities.

Plants are arguably the most important component of a manufacturing organization's supply chain. Plant-level performance can have repercussions up and down the supply chain. Valuable information is often hidden in events and trends on the shop floor. An enterprise must uncover this information and convert it into insight, making manufacturing intelligence a competitive weapon against its competitors. An enterprise needs to leverage real-time manufacturing intelligence to achieve higher levels of supply chain performance.

To avoid expensive capital expenditures, companies must increase overall manufacturing efficiency. By re-capturing manufacturing capacity currently lost due to waste, significant opportunities exist to boost production. Manufacturing intelligence solutions can pinpoint

improvement opportunities, allowing companies to unlock capacity for a more sensible approach to revenue growth.

Unplanned Downtime: Significant opportunities exist across plant networks to recapture machine losses. Reducing changeover time, operational downtime, etc. leads to proportional increases in manufacturing capacity. Best practices implemented on a single line can be transferred easily to other similar lines, multiplying the impact.

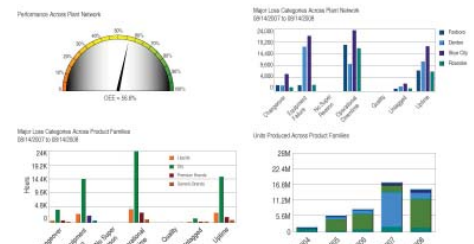
Production Variability: Production consistency translates into a more reliable and predictable supply chain increasing the rate of first time "perfect orders" while cutting time lost due to rework. Stable lines run at higher production rates consistently, resulting in higher volume.

Informance Manufacturing Intelligence Solution

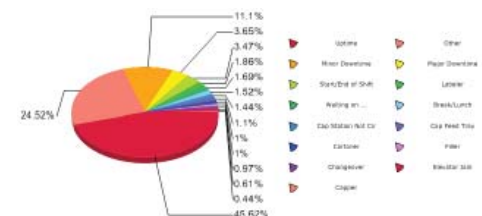
The Informance Manufacturing Intelligence Solution by Solarsoft enables manufacturers to boost production without capital investments or turning to outsourcing. Insight into reducing unplanned downtime and increasing production consistency for the entire plant network allows companies to implement achievable volume enhancing strategies. By combining best-of-breed software capabilities with advisory

services, Informance delivers a comprehensive solution that offers a quick ROI with greater deployment success.

Informance's powerful interactive analytics report on up-to-the-second information on all plants and manufacturing processes monitored. Supply chain executives are able to set improvement plans to reduce unplanned downtime and minimize production variance across the entire plant network. Real-time notifications alert line managers of tactical production issues, and supply chain managers of potential improvement areas that are more strategic in nature.



Personalized dashboard delivers maximum visual impact in a format optimized for quick absorption



Real-time capacity utilization information allows a plant manager to set and adjust production parameters